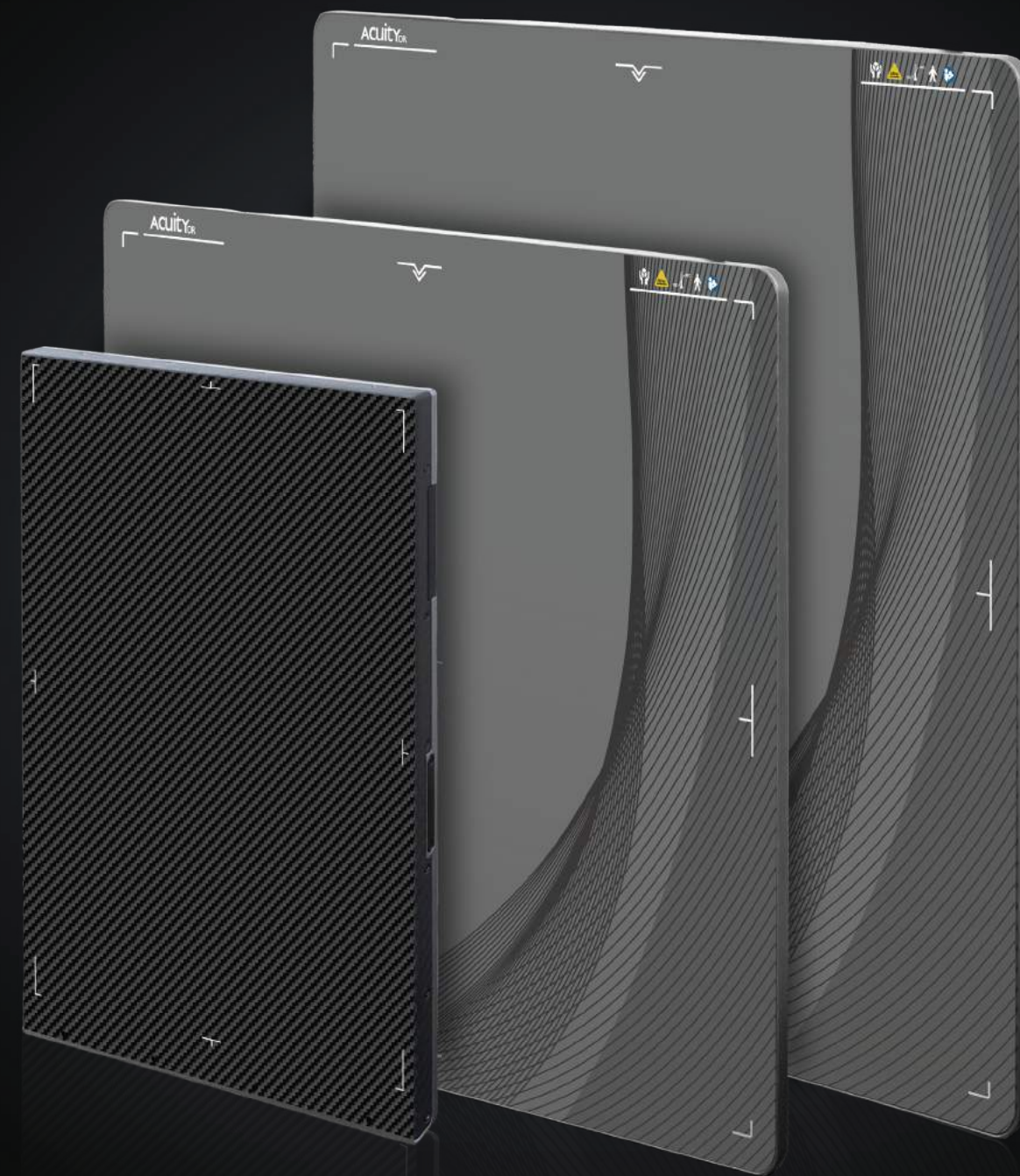




Radmedix 2510 Lance Drive Dayton, OH 45409 USA

© 2023 Radmedix Inc. All rights reserved.



G4 ACUITY_{DR} 
Next Generation Performance.

G4 Acuity_{DR}

Next Generation Performance,
Durable DR Solution.

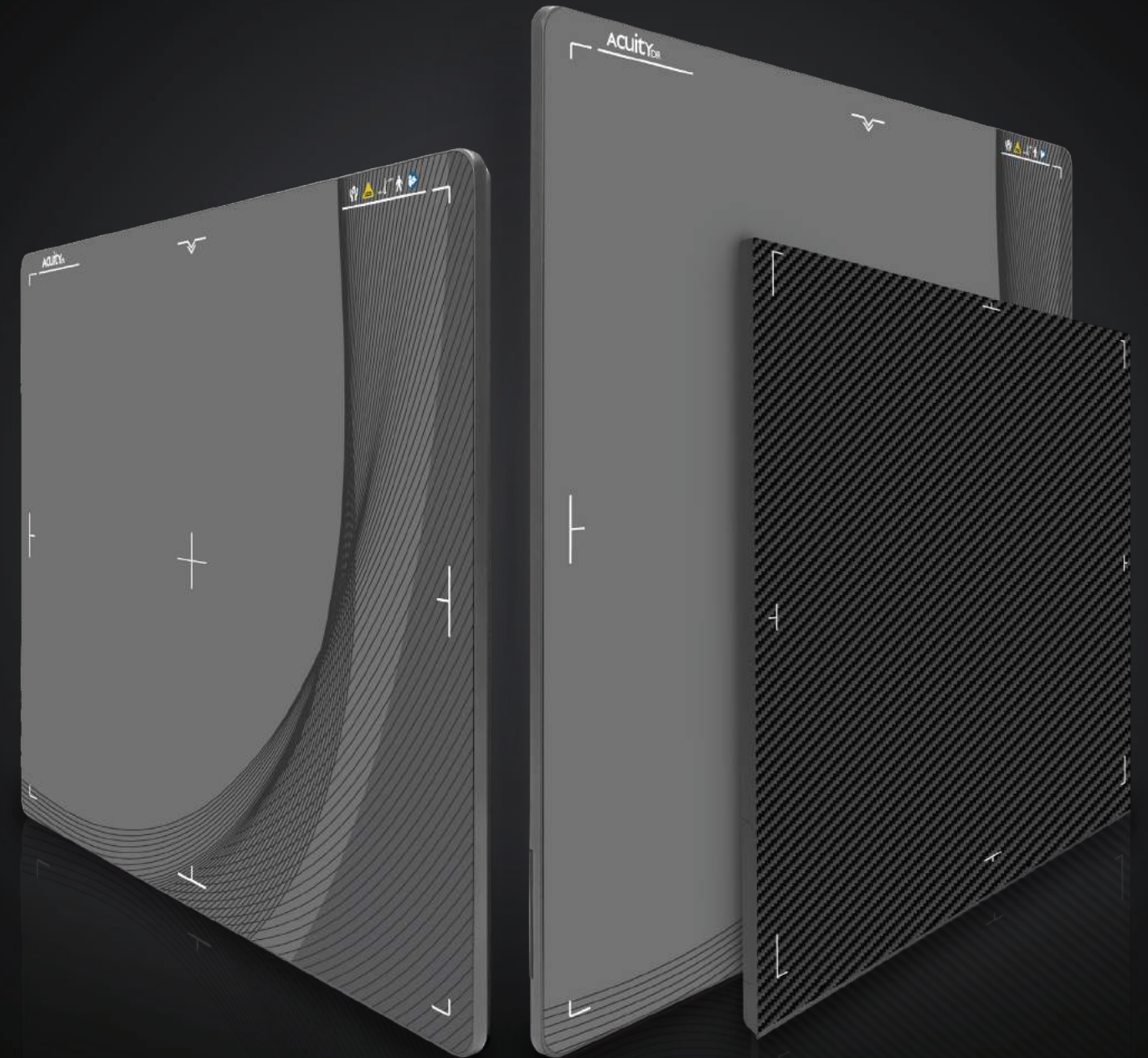
14x17 | 17x17 | 10x13

G4 Acuity DR Detectors: Radmedix has introduced its next generation premium panel line for integrated and retrofit applications. This panel line has been developed with the latest in digital detector technology, utilizing a flexible glass-free substrate in the 1417 for ultimate durability.

All G4 panels have been engineered with a carbon fiber chassis to make them more lightweight with better protection than ever before. The image quality has also been upgraded with powerful image processing algorithms and they utilize a 100 µm pixel pitch for improved clarity/depth with lower doses.

Experience our **Next Generation Performance** G4 Acuity DR Panels today. Change the way you think about diagnostic imaging.

*Page 9-10 for a detailed breakdown of each panel



G4 Acuity DR Panel Line Key Features.



100 μ m Pixel Pitch

Uses a wide 16-bit dynamic range for highly detailed image resolution

Lithium Ion Battery

High efficiency lithium ion battery with up to a 9.5hr charge capacity

Patient Dose Reduction

Stable and reliable AED for patient dose reduction without limiting capturing all image data

IP56 Protection Rating

G4 panels have extreme resistance against liquid, dust, and bodily fluids

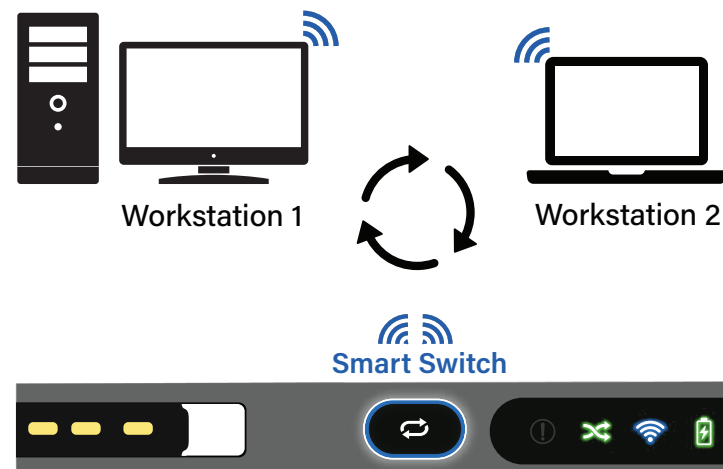
Increased Durability

Carbon fiber chassis for better protection and ultimate durability

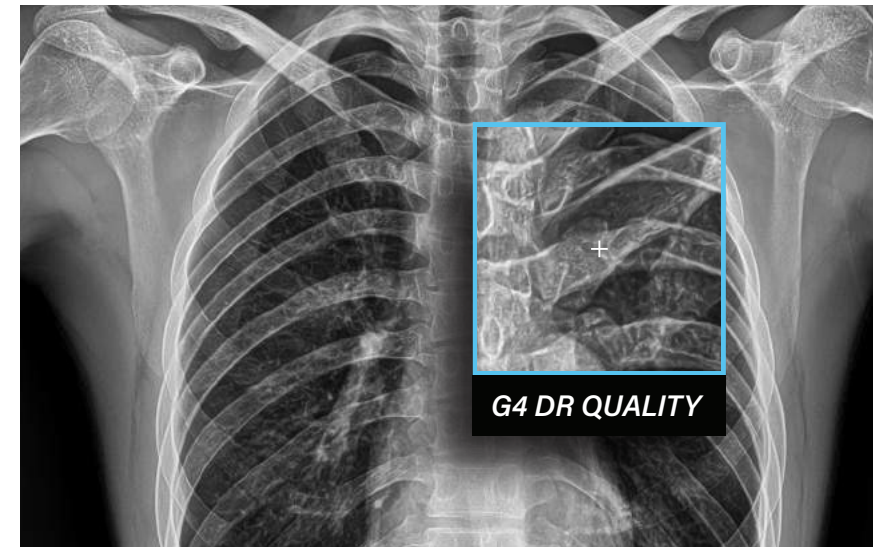
G4 1417 Smart Switch Technology

Radmedix smart switch technology allows for easy "smart switching" between two workstations for mobile and stationary x-ray needs.

With a single push of a button, the G4 1417 panel allows the user to quickly switch between use in a stationary x-ray room with a PC workstation to a portable tablet or laptop for ultimate portability.



Enhanced Images 100 μ m Pixel Pitch.



**Sharper Lines.
Greater Detail.
Achieved at
Lower Doses.**

- Superior image sharpness which uses enhanced anatomical image processing algorithms
- Direct deposited CsI technology for ultra low dose imaging
- Increased DQE at lower doses to reduce noise
- Increase in MTF from previous generation detectors for better spatial resolution
- Patient dose reduction with AED technology
- Quick acquisition time for faster image display



Powerful AccuVue Software

AccuVue's powerful engine offers the user a convenient user-friendly interface to display various anatomical tuning features from a single exposure to offer the most out of a diagnostic imaging solution. Increased diagnostic workflow with feature packed diagnostic tools and options such as stitching and clinical specialty markup tools.

Fast Image Display Time: G4 panels process higher quality images and maintain fast image display.

Keep your office operating at maximum efficiency for increased productivity.

Ultra Durable G4 1417 Panel.



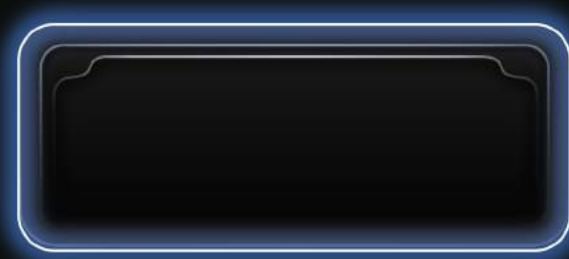
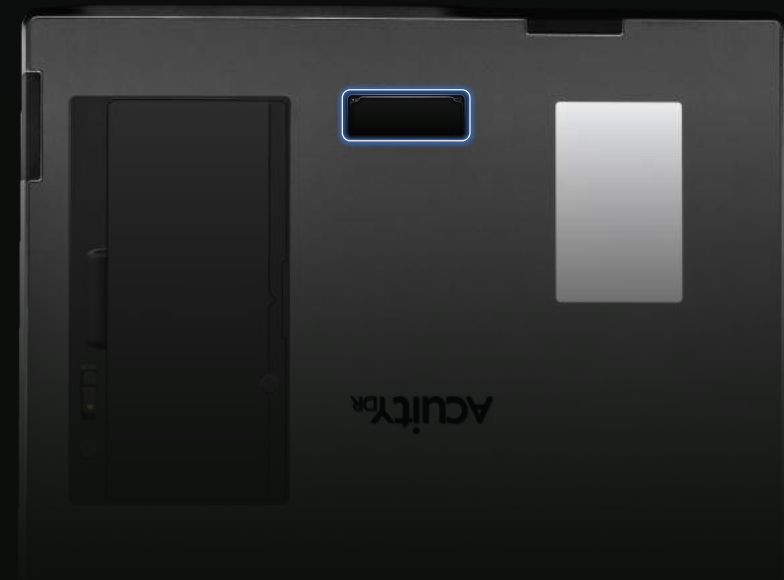
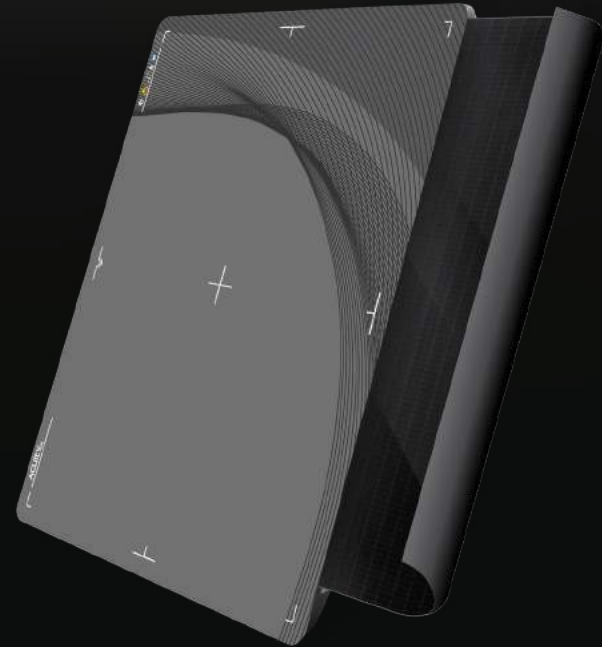
Introducing Glass-Free G4 1417 Panel

Many DR panels in the industry use a glass substrate TFT but in our G4 Acuity DR 1417 panel we are introducing a flexible GLASS-FREE substrate.

This innovative technology makes the panel more durable than ever before.

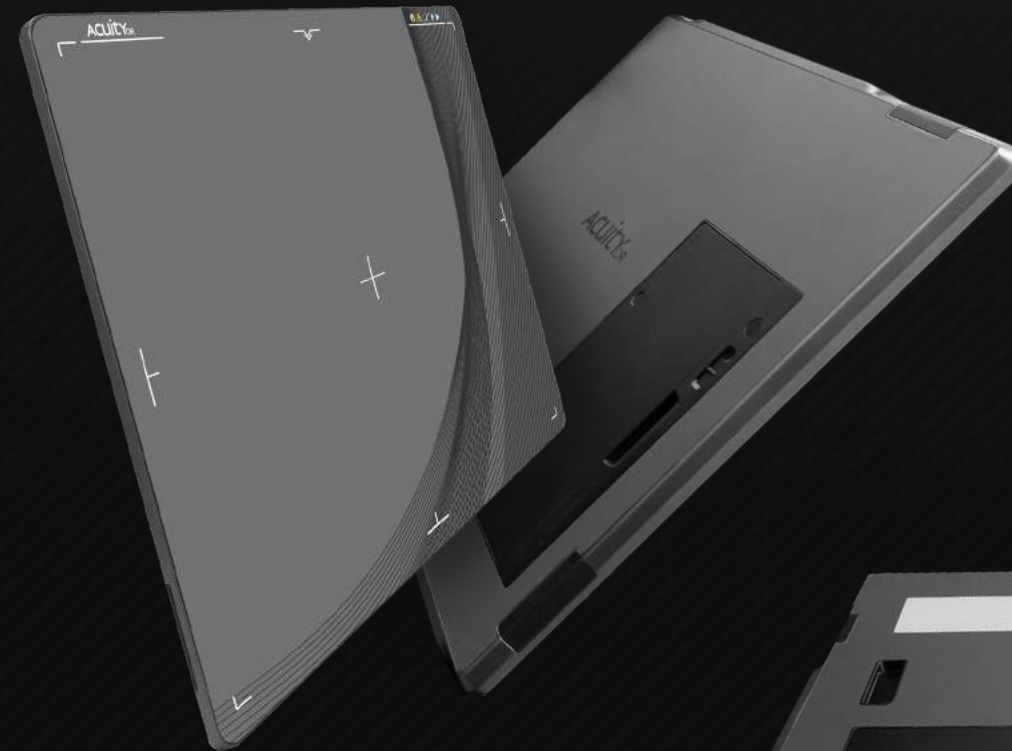
Lightweight Convenience:

G4 panels are constructed with lightweight carbon fiber and are designed to be easy to grasp from any angle with its ergonomical curved edges along each side.



G4 Acuity DR lightweight panels have also been thoughtfully designed for easy carrying with an integrated hand grip.

Increased Protection and Durability.



Stronger Drop Protection.



Durable Glass-Free 1417 Panel

We upgraded the glass substrate in the G4 14x17 panel with our new, innovative flexible substrate TFT which makes the panel better equipped to prevent damage from shock.

Combined with a carbon fiber chassis, we've also increased the drop impact resistance from our previous generation of detectors for the most demanding clinical environments.



Flexible TFT - Increases Drop Impact Resistance

Limitless Technology.

Increased Battery Life

G4 Acuity DR panels offer the latest lithium ion battery technology with a 9.5hr charge in the 14x17 and an 8hr charge in the 10x13. The 17x17 G4 DR panel has a charge of 5.5hrs.

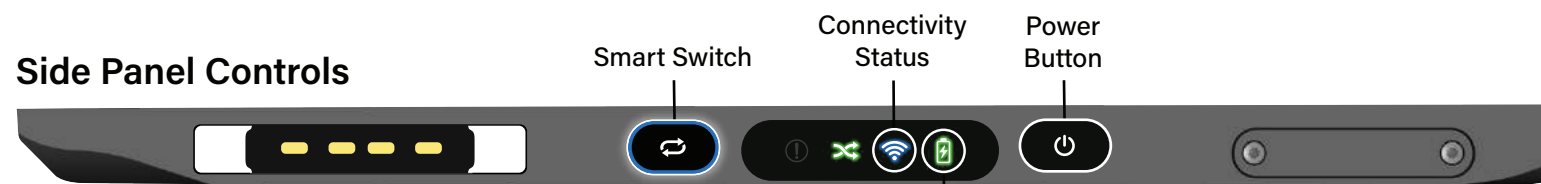
Perform exams with confidence in the most demanding clinical environments without the burden of frequent battery changes.

Battery Life Indicator Button. The battery has a button which quickly shows battery life through LED indicators.

G4 Charger. G4 panels come with 2 batteries and a rapid charger. The batteries are universal between each panel size and can swap interchangeably.



Side Panel Controls



G4 Acuity DR Protection Cases

G4 Acuity DR panels are available with both gridded and non-gridded protection cases to provide ultimate panel protection for any wireless panel size.

Cases come equipped with an ergonomical handle as well as a lock and secure latch to keep the detector secure during handling.



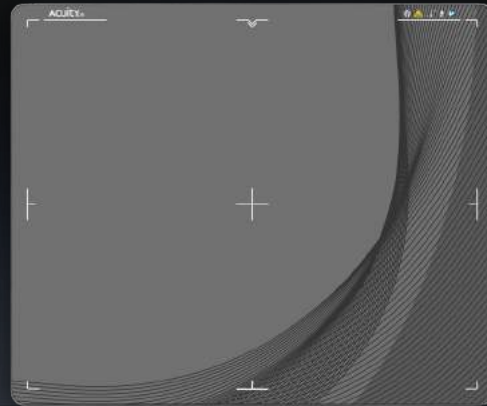
Ultimate G4 IP56 Protection.

Protected in the most demanding clinical environments.

G4 Acuity DR 1417

G4 1417 is our next generation, flagship 14x17 wireless DR panel. It features IP56 protection for resistance against liquid and dust intrusion.

The NEW innovative flexible TFT, allows for a premium DR solution with exceptional durability. Its lightweight build and exceptional image quality makes it the perfect choice for any clinical application.



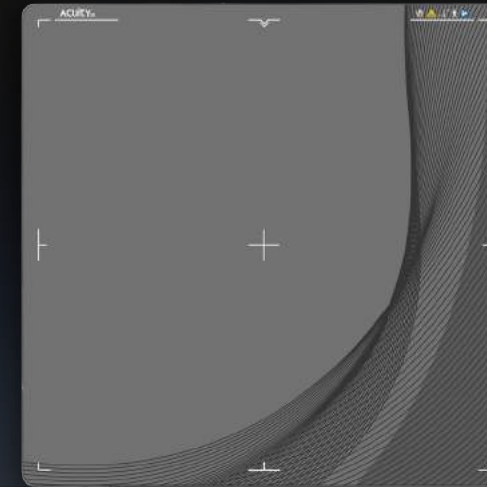
Features

- ✓ Cassette sized detector for any clinical application
- ✓ NEW flexible TFT for ultimate durability
- ✓ 100 µm pixel pitch for sharper image detail
- ✓ Extended battery life up to 9.5 hrs for all day clinical use

G4 Acuity DR 1717

G4 1717 is our next generation, high-performance 17x17 DR panel for medical, veterinary, and chiropractic imaging. It features IP56 protection for resistance against liquid and dust intrusion. Configurable in both wireless and tethered options.

With its exceptional image quality, G4 1717 is an excellent high-end DR upgrade/retrofit solution or fully integrated into Radmedix x-ray suites.



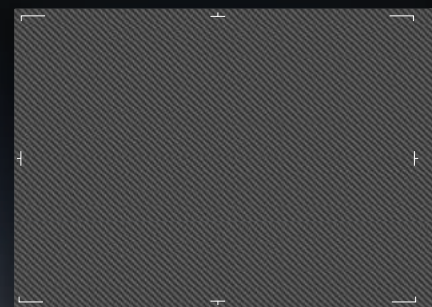
Features

- ✓ Cassette sized detector with low dose exams
- ✓ Maximized full field of view perfect for no-rotation medical/vet/chiro exams
- ✓ 100 µm pixel pitch for sharper image detail
- ✓ Extended battery life up to 5.5 hrs for all day clinical use

G4 Acuity DR 1013

G4 1013 is our next generation, high-performance 10x13 wireless DR panel designed for extremity orthopedics, podiatry, and equine.

It also has IPX5 protection for resistance against liquid intrusion.



Features

- ✓ Cassette sized detector for small format, detailed exams
- ✓ AED control, for reliable image capture
- ✓ 100 µm pixel pitch for sharper image detail
- ✓ Extended battery life up to 8 hrs for all day clinical use

| Specifications | G4 Acuity DR 1417 | G4 Acuity DR 1717 | G4 Acuity DR 1013 |
|--------------------|-------------------------|------------------------------|-----------------------|
| Model | 14 x 17 Wireless | 17 x 17 Wireless or Tethered | 10 x 13 Wireless |
| Detector Type | *NEW Flexible Csl | Csl | Csl |
| Weight | 6 lbs | 7.5 lbs | 5 lbs |
| Pixel Pitch | 100 µm | 100 µm | 100 µm |
| Resolution | 4.3 1p/mm | 4.3 1p/mm | 4.3 1p/mm |
| A/D Conversion | 16-bit | 16-bit | 16-bit |
| Battery Capacity | 9.5hrs of continued use | 5.5hrs of continued use | 8hrs of continued use |
| Trigger Mode | AED | AED | AED |
| Ingress Protection | IP56 | IP56 | IPX5 |
| Wifi | 2.4G, 5G, IEEE802.11 | 2.4G, 5G, IEEE802.11 | 2.4G, 5G, IEEE802.11 |