

# *Persona U*

Digital Radiography U-arm System

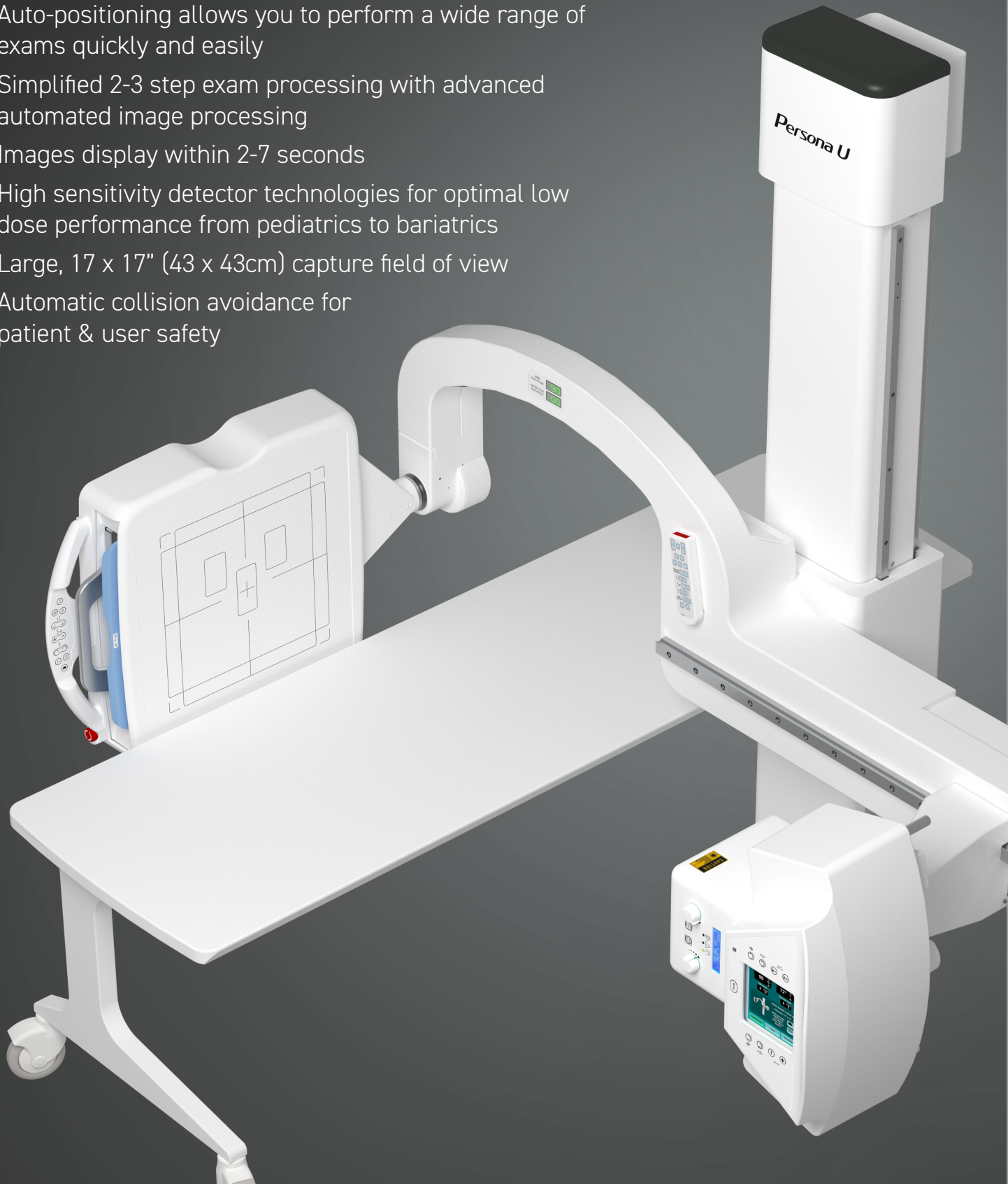
Space and cost saving, multi-purpose  
digital radiography system  
without sacrifice



Featuring Fujifilm DR productivity, image quality and dose performance

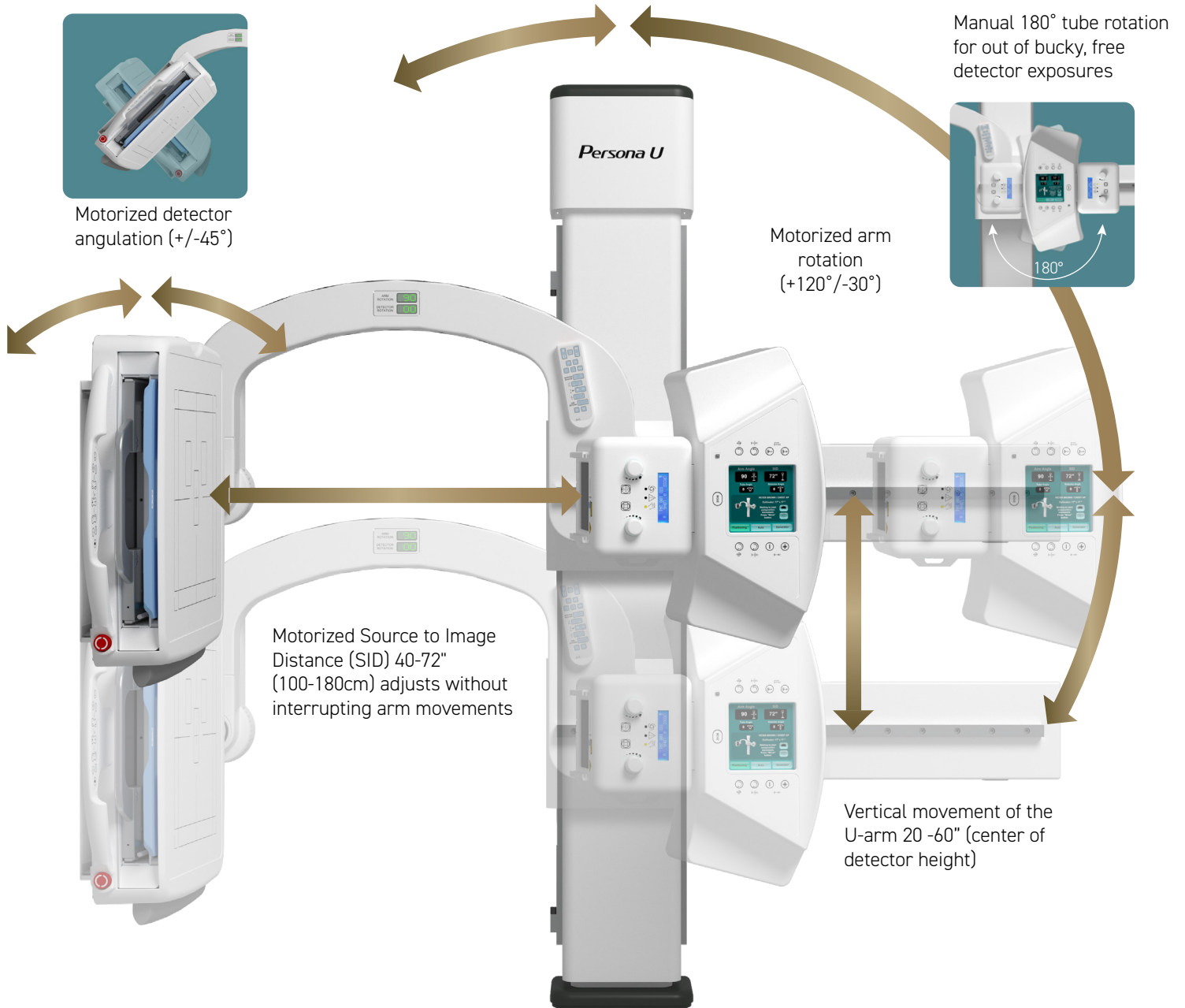
# Persona U offers a simplified space-saving design that's built to last and perform

- Small footprint and low installation cost
- User-friendly graphic menus and tube display
- Auto-positioning allows you to perform a wide range of exams quickly and easily
- Simplified 2-3 step exam processing with advanced automated image processing
- Images display within 2-7 seconds
- High sensitivity detector technologies for optimal low dose performance from pediatrics to bariatrics
- Large, 17 x 17" (43 x 43cm) capture field of view
- Automatic collision avoidance for patient & user safety



# Persona U is flexible

Very flexible! Its versatile articulations allow you to perform a wide range of general radiographic exams on virtually anybody or body part. Take a look:



Graphic display, dedicated shortcuts and hand held remote, allow quick and easy auto-positioning to preferred frequent exams/body parts:

Chest PA



Skull PA



Elbow



Lateral Foot

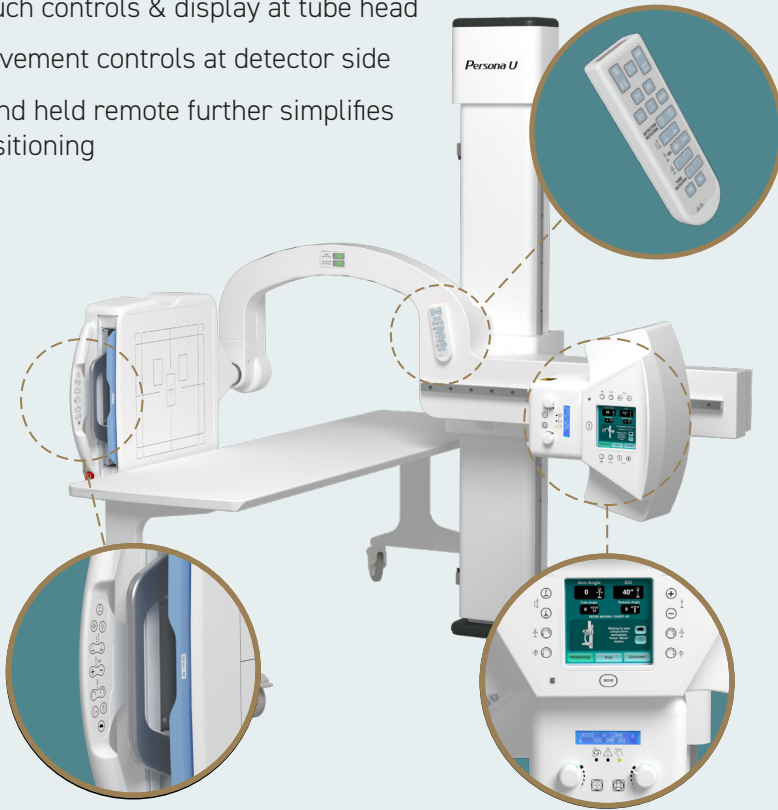


Patella



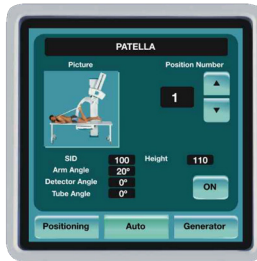
# Simple, automatic operation

- Touch controls & display at tube head
- Movement controls at detector side
- Hand held remote further simplifies positioning



# Positioning is fast, simple and safe

Persona U's anti-collision system features dual laser and pressure sensors to help ensure patient and user safety.



**Auto Positioning** - Pre-programmed exam menu shortcuts are accessible via the tube touch-screen. Simply select a study and the system will move to default position, SID, collimation field and detector rotation.

**System Angulation** - digital readout on the u-arm displays arm and detector rotation.

**Generator Console** - integrated with the FDX Console technologist workstation by SpeedLink, optimal dose techniques are automatically mapped to site preferences based on exam selected, manual adjustments can be made at the generator console included.

# Advanced image processing

Image processing is achieved through the FDX Console

## Dynamic Visualization II

Optimizes image quality with intelligent 3D feature and exposure data recognition technology

Advanced thickness and feature recognition algorithms automatically adjust contrast and density for individual characteristics of body parts and orthopedic hardware. (Option)



Dynamic Visualization II



Conventional Processing



Dynamic Visualization II



Conventional Processing



Dynamic Visualization II

## Virtual Grid

Provides high-quality images without a grid

Intelligent image processing corrects for the effects of scatter radiation while retaining high contrast and sharpness. Improves patient comfort, simplifies positioning, eliminates grid related retakes and allows for as much as 50% lower dose compared to physical grid exams. (Option)



Virtual Grid



No Grid



Virtual Grid



Real Grid

Exceptional imaging for all body parts and bariatric images



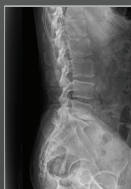
Abdomen



Cervical Spine



Thoracic Spine



Lumbar Spine

# Persona U allows you to perform a wide range of exams without sacrificing productivity – or space

Persona U is a fully motorized, auto-positioning, single detector DR solution that's easy to use and versatile. It provides freedom to perform virtually every type of radiographic exam, including upright, seated and supine, even knee and skull exams. Its innovative design simplifies positioning workflow, since its x-ray tube and detector are always aligned regardless of tilt position or detector angle. Its exceptionally high throughput, image quality, dose performance and flexibility make it a great space-saving alternative to traditional table- and overhead-based systems without compromise.

## Cost and Space Saving Design

The compact all-in-one design is scalable to fit tight spaces and budgets. Since the system is based on a single column floor mounted design and there is no separate wall stand or overhead suspension, it eliminates added costs of ceiling preparations, takes less time to install and fits much smaller spaces. The system is built to last and perform for imaging centers, orthopedic facilities, urgent care clinics and hospital radiology departments.

Configurations – the standard system includes u-arm, generator, generator console, 17x17" detector and FDX Console workstation. Component choices include various generator sizes, building power compatibility and auto or manual collimation. Other options include: choice of fixed and motorized height mobile patient tables and choices of secondary detectors.

## Fujifilm DR Detectors

Patented ISS Technology

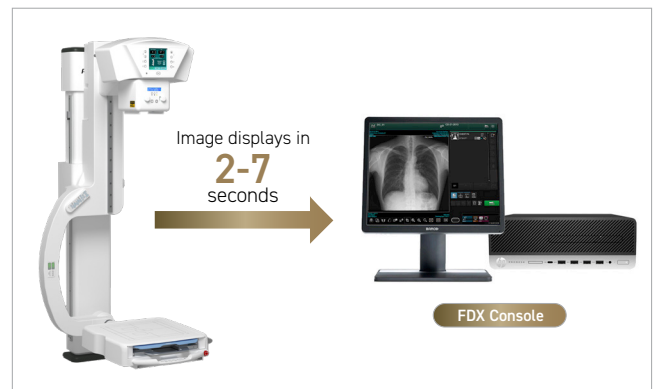


Persona U is designed for use with our 17x17" FDR ES detector. The detector is removable for tabletop, wheelchair and cross table exams.

Other detector models and other sizes for exams outside of the u-arm receptor are optionally available. All models feature Fujifilm's Patented ISS for low dose and exceptional image quality.



## Unprecedented Speed



Persona U delivers fast, easy workflow and images display at the FDX Console in as little as 2-7 seconds from exposure. Thanks to Fujifilm's high sensitivity DR detectors and refined processing, image quality is automatically optimized for diagnosis.

Fujifilm's SpeedLink control software automates preferred techniques, collimation field size and built-in filters to optimize dose saving characteristics of our latest DR detectors to the exam selected.

NOTE: SpeedLink is not available with manual collimator configuration.

# Specifications

## Components:

**Image Detector** specs based on FDR ES 17c model (other CSI & GOS models available)

Image size: 17 x 17" (43 x 43cm)  
 Outer dimensions: 18" x 18" x 0.6"  
 Pixels: 2,836 x 2,832 pixels  
 Pixel Pitch: 150 micron, 16 bits/pixel

**FDX Console** technologist workstation. Preview image display time: 2-7 seconds

NOTE: choices of detector and workstation sold separately.

### Universal Arm

Dual speed motorized movements  
 Vertical travel: 47.8", speed 3.4"/sec.  
 Arm Rotation: +150° (90° +/-30°)  
 Tube Rotation: 180°  
 Detector Tilt: +/-45°\*  
 SID: 39.4 - 7.8" (100 - 180cm)  
 Collimator: Manual or Automatic with laser & light field, rails for accessories & tape measure

**Generator Console** - system includes 17" touchscreen console. Allows patient specific fine tuning of techniques and positioning parameters.

Generator Options:	Corresponding X-ray Tube:
<b>40kW</b> single-phase, 230 VAC, 125kVp, 500mA, 630mAs	300 KHU LS
<b>50kW</b> single-phase, 230 VAC, 125kVp, 630mA, 630mAs	300 KHU LS
<b>50kW</b> 3-phase, 480 VAC, 125kVp, 630mA, 630mAs	300 KHU LS
<b>65kW</b> 3-phase, 480 VAC, 125kVp, 630mA, 630mAs	400 KHU LS
<b>80kW</b> 3-phase, 480 VAC, 125kVp, 800mA, 630mAs	600 KHU LS
All tubes: dual focal spots (0.6-1.2mm), 150kVp, 12°	

## Options:

**Collimator:** Manual or Automatic  
**Generator:** 40, 50, 65, 80kW  
**Tube:** 300, 400, 600kHu

### Mobile Tables: Fixed Height

Laminated OR Carbon Fiber Top,  
 551lb (250kg) capacity laminate carbon  
 78.7L x 25.6W x 27.6"H / Wt 101.4lb laminate, 66lb carbon

### Open area between wheel base:

74 x 25.6" laminate, 76.3 x 25.6" carbon

### Mobile Tables: Motorized Elevation

Laminated or Carbon Fiber Top, Min. height 23.6", Max. 39.3"  
 551lb (250kg) capacity  
 78.7L x 25.6W x 27.6"H / Wt 101.4lb laminate / 66lb carbon

### Table Top Detector Holder

**Reciprocating Grid:** 103 lines, Ratio 10:1, FD 59" (150cm)

**Fixed Grid Options:** 103 lines, Ratio 10:1, FD 39.4" (100cm)  
 103 lines, Ratio 10:1, FD 70.9" (180cm)

## Power Requirements:

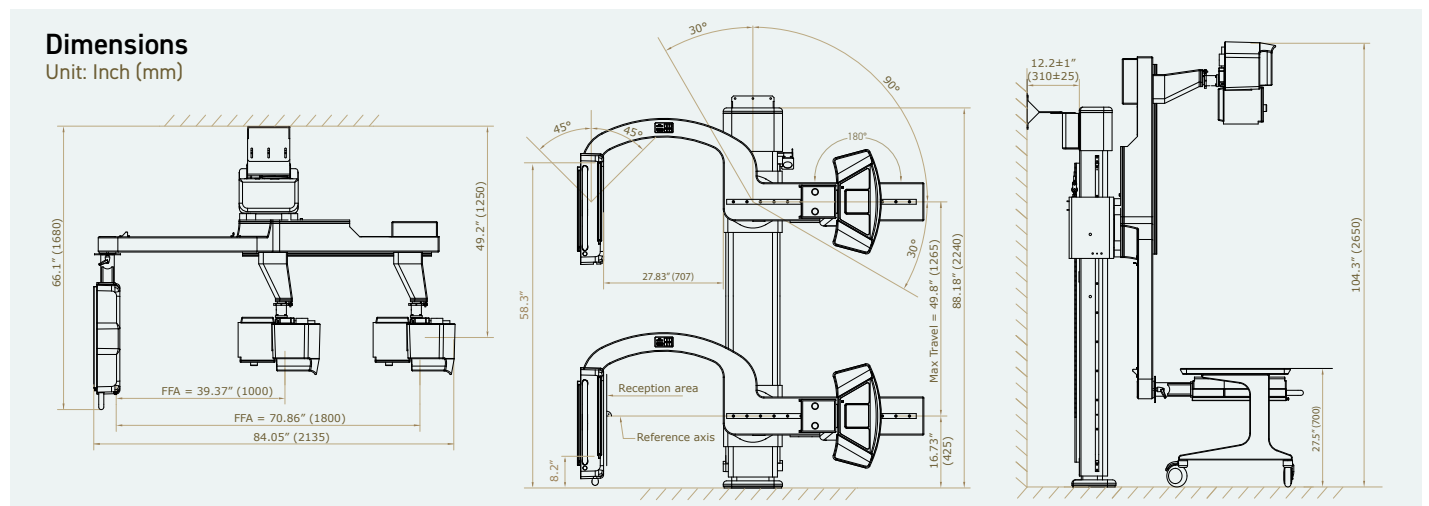
**Generator:**  
 Line Voltage: 230/240 VAC, +/-10%  
 Power Consump: 2.5 kVa, Std. 15kVa (80 w standby)  
**Detector:** Single-phase 50/60Hz: 110-240V 10%, 2.1, 2.5A  
**Universal Arm:** Single-phase 50/60Hz: 230/240V, 10%

## Environmental Conditions:

Temperature: 50 - 104° F  
 Humidity: 30 - 75% RH (non-condensing)  
 Atm: 700 - 1060 hPa

## Dimensions:

**Universal Arm:** Floor to ceiling or wall support  
 Min Room: 106.3H x 84W x 84"L  
 Dimens. (WxDxH): 84 x 66 x 88.2"; Wt. 714 lb  
**Controller Box:** 23 x 17 x 24"; 139 lb  
**Generator:** 23 x 17 x 27" (wt. varies by kW size)



## FUJIFILM Healthcare Americas Corporation

81 Hartwell Avenue, Suite 300, Lexington, MA 02421  
 www.fujifilmusa.com 800.431.1850

©2022 FUJIFILM Healthcare Americas Corporation

DOC-0051744-A

