

REX² Premium Dental Sensor

Acquire | Store | View | Share

Digital Intra Oral Sensor CMOS

Rex2 Premium sensor



Rex2 sensor is the modern dentist's sensor of choice. The durable Rex2 sensor with the best exposure levels requires only 1/7 the radiation of traditional X-rays. Rex2 sensor is a complete radiography system that integrates with your image management and patient management software. Rex2 sensor is versatile and allows for image adjustments in terms of brightness, contrast, gamma, and sharpness. These adjustments allow for more accurate diagnosis. Rex2 sensor and its integrated USB connection ensures fast and convenient image capture.

Rex2 sensor ensures the highest contrast resolution. This allows you to see small changes in enamel density which in turn allows for a more accurate diagnosis and better treatment plans.

Rex2 sensor attains the highest quality image with the lowest amount of radiation exposure. This ensures the safety of patients and operators alike.

COST EFFECTIVE

EXTREMELY HIGH RESOLUTION

SAFER

CABLE DURABILITY

HIGH COMPATIBILITY

LOW MAINTENANCE COST

SMOOTH EDGES

ROUNDED CORNERS

THINNER THAN COMPETITORS

WATERPROOF

USB DIRECT INTERFACE

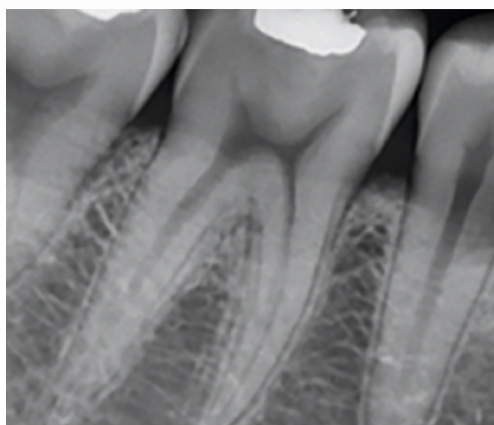


Why should I go Digital?

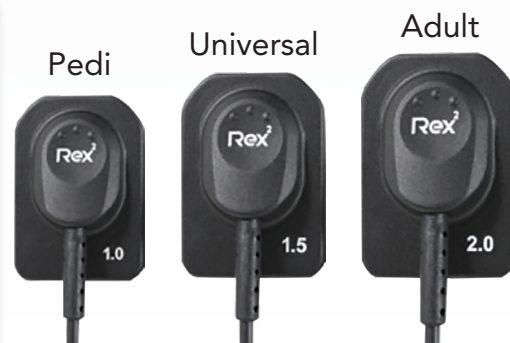
Save Money - Huge overall saving by dispensing with the cost and hassle of periodic film and developing chemical purchases.

Save Space - Do away with valuable real estate taken up by dark rooms and increase overall productivity.

Save Time - No more time spent needlessly developing film. Instantly diagnose your patient.



Three Sizes Available



Call us for an in-office demo today.

1-800-385-9593



REX² Premium Dental Sensor

Digital Intra Oral Sensor CMOS

SPECIFICATIONS

Sensor	
Sensor Type	CMOS
Scintillator Csl	TL with FOP
Active Pixel Array	
Size 1.0	1014 x 676 Pixels (30.01 x 20.01 mm)
Size 1.5	1115 x 810 Pixels (33.00 x 23.98 mm)
Size 2.0	1216 x 878 Pixels (35.99 x 25.99 mm)
Pixel Pitch	29.6 μm

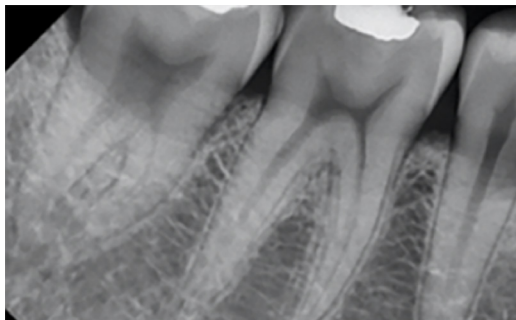
Image Quality	
Line Pair	18 lp/mm
A/D Conversion	12 bits

Communication Interface	
Communication Interface	Direct USB 2.0

Environmental	
Water / Dust Proof	IP68
Ambient Temperature	10° C to 30° C (usage)
Ambient Temperature	-20° C to 60° C (storage)
Relative Humidity	30% to 95% (usage)
Relative Humidity	10% to 95% (storage)

Mechanical	
Dimensions (W x L x H)	
Size 1.0	36.8 x 25.4 x 4.8 mm
Size 1.5	39.5 x 29.2 x 4.8 mm
Size 2.0	42.9 x 31.3 x 4.8 mm
Energy Range	50~100 kV
Cable Length	2.7m
Electrical Rating	DC 5V, 500mA

Warranty	
1 Year Manufacturer Warranty	



For complete product information, visit televeresystems.com